



GAT MONTHLY MEMBERSHIP PROGRESS REPORT

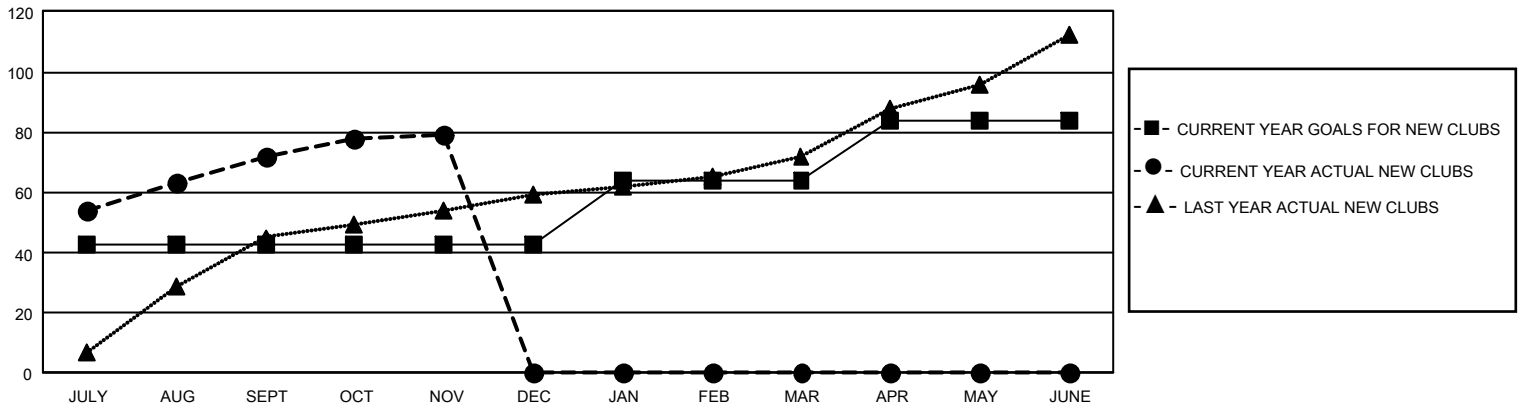
Results as of: 11/30/2025

GMT Constitutional Area 6 - I, Group F

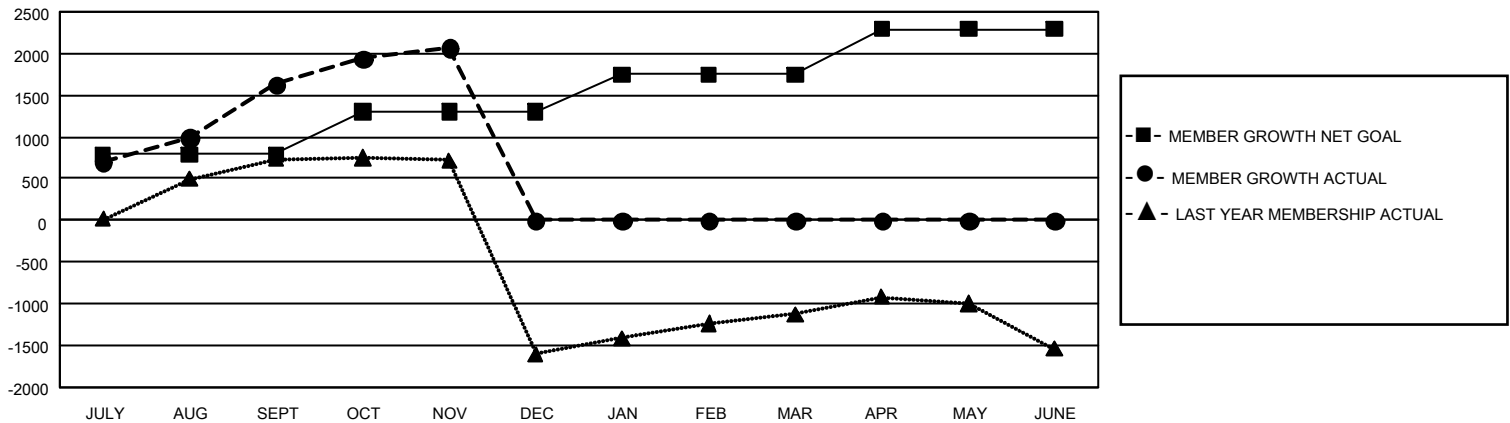
REPORT DOES NOT INCLUDE CLUBS IN UNDISTRICTED AREAS.

Clubs				Members			
RESULTS FOR 2025-2026				RESULTS FOR 2025-2026			
QUARTER	NEW CLUB GOAL	NEW CLUBS	DROPPED CLUBS	QUARTER	MEMBER GROWTH NET GOAL	MEMBER GROWTH ACTUAL	DROPPED MEMBERS ACTUAL (including transfers)
JULY/AUG/SEPT	129	72	5	JULY/AUG/SEPT	790	3,385	1,454
OCT/NOV/DEC	0	7	4	OCT/NOV/DEC	515	1,051	534
JAN/FEB/MAR	63	0	0	JAN/FEB/MAR	442	0	0
APR/MAY/JUNE	60	0	0	APR/MAY/JUNE	545	0	0

GOALS AND ACTUAL NEW CLUBS CUMULATIVE



GOALS AND ACTUAL MEMBERS CUMULATIVE



DROPPED CLUBS: 9

559 CLUBS OF 1,254 ADDED 1 OR MORE NEW MEMBERS

GENDER DISTRIBUTION

MALE	23,594 (72.60%)
FEMALE	8,893 (27.37%)
NON BINARY	0 (0.00%)
PREFER NOT TO ANSWER	10 (0.03%)

DROPPED MEMBERS

DECEASED	27
CLUB CANCELLED	133
OTHER	1,820
TOTAL	1,980

[CLICK HERE FOR CUMULATIVE MEMBERSHIP DATA](#)

TOTAL FAMILY UNIT MEMBERS	11,935
FAMILY MEMBERS PAYING HALF DUES	7,232